

# PFJR: Trochlear dysplasia

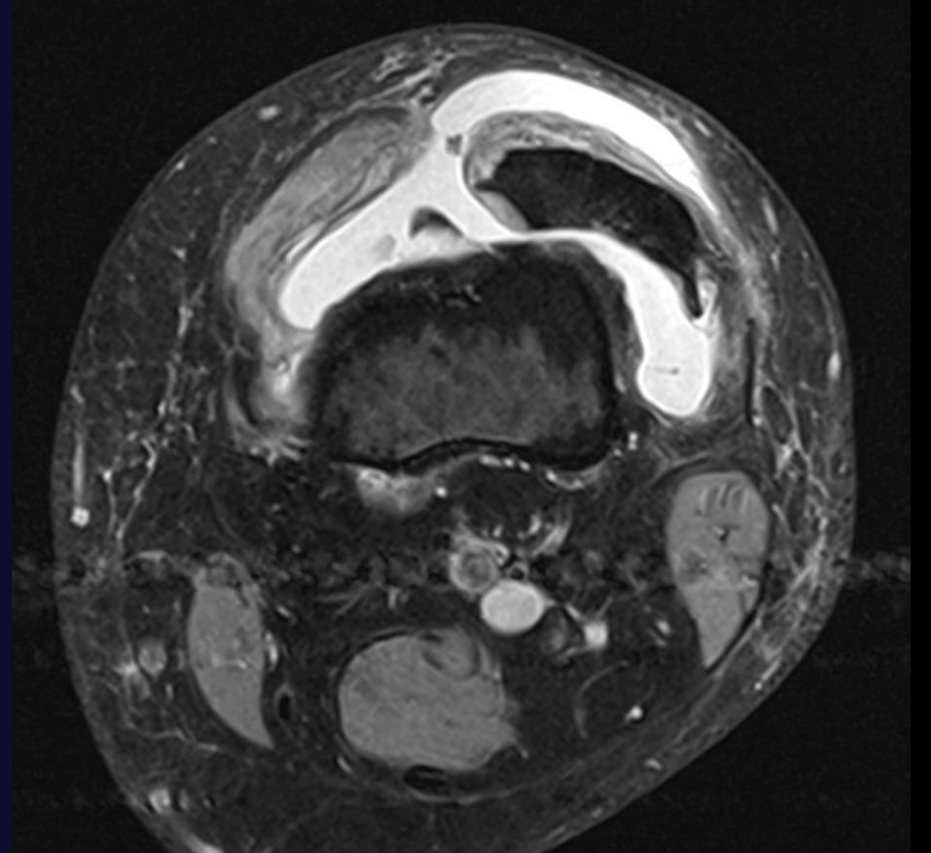


Sam Oussedik BSc MBBS FRCS(Tr&Orth)

Consultant Orthopaedic Surgeon & Dept Head, UCLH  
Hon. Assoc. Prof., UCL

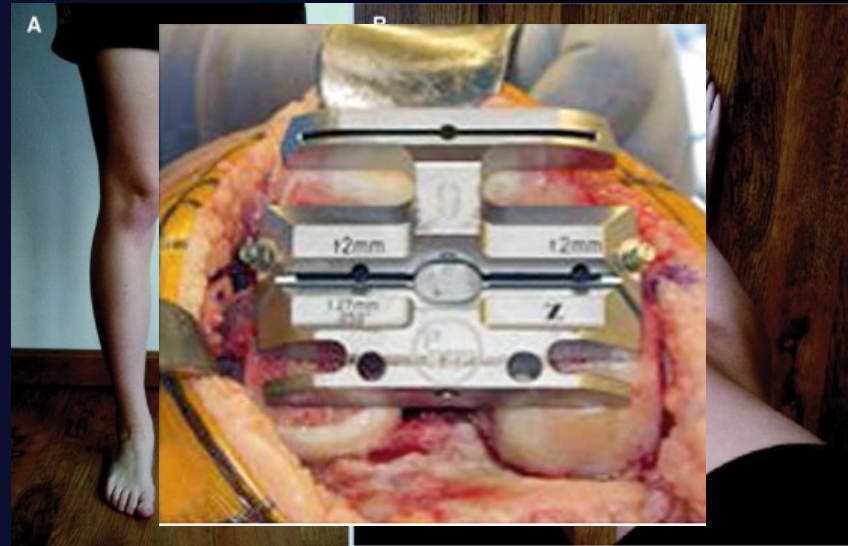
# Trochlear dysplasia

- Commonly associated with isolated PFJ OA
- There may be a history of prior PFJ instability
- Consider pre-op radiographs
- Chronic dislocation uncommon



# Patella stability

- Trochlear rotational profile
  - Trochlear component rotation / translation



# Patella stability

- Femoral rotational profile
  - Femoral component rotation / translation
- Trochlea shape and depth
  - Trochlear component design
    - Inlay vs onlay



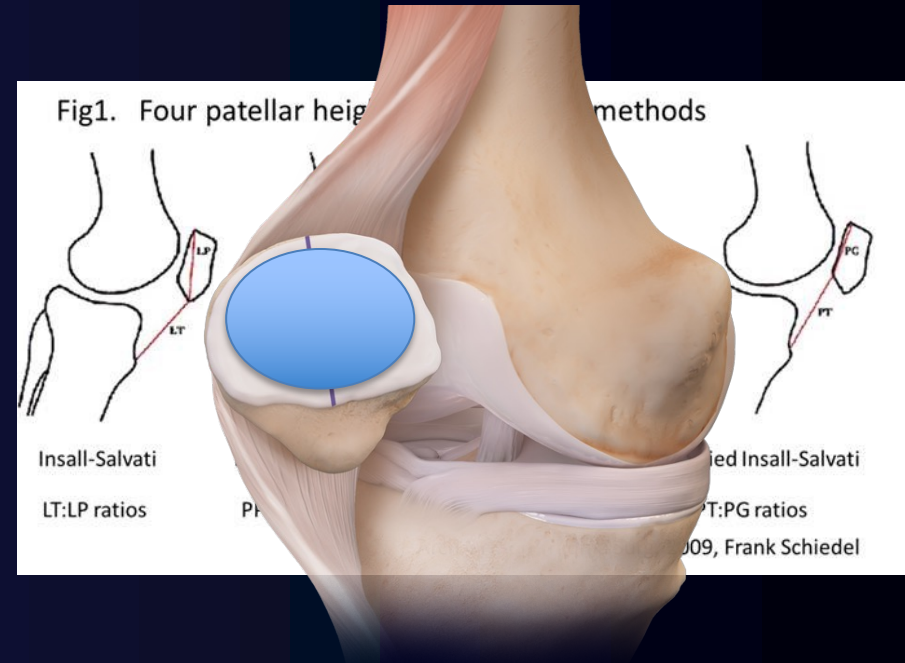
# Patellar resurfacing

- Measure pre-resection thickness
- Remove same thickness as replacing
- Do not resect beyond residual 12mm



# Patella resurfacing

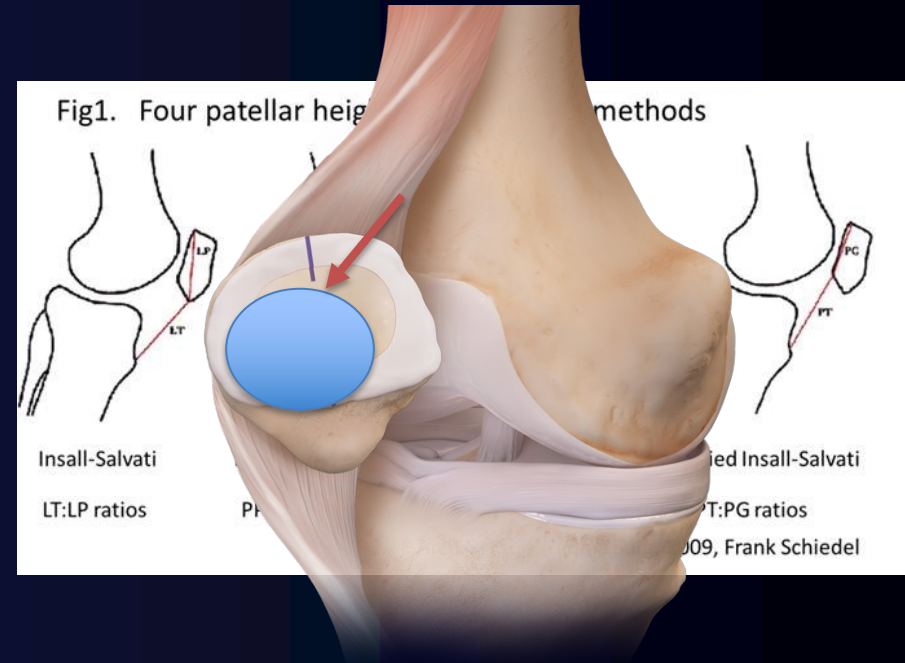
- Femoral rotational profile
  - Femoral component rotation / translation
- Trochlea shape and depth
  - Femoral component design
- Patellar height
  - Patellar button distalisation





# Patella stability

- Femoral rotational profile
  - Femoral component rotation / translation
- Trochlea shape and depth
  - Femoral component design
- Patellar height
  - Patellar button distalisation

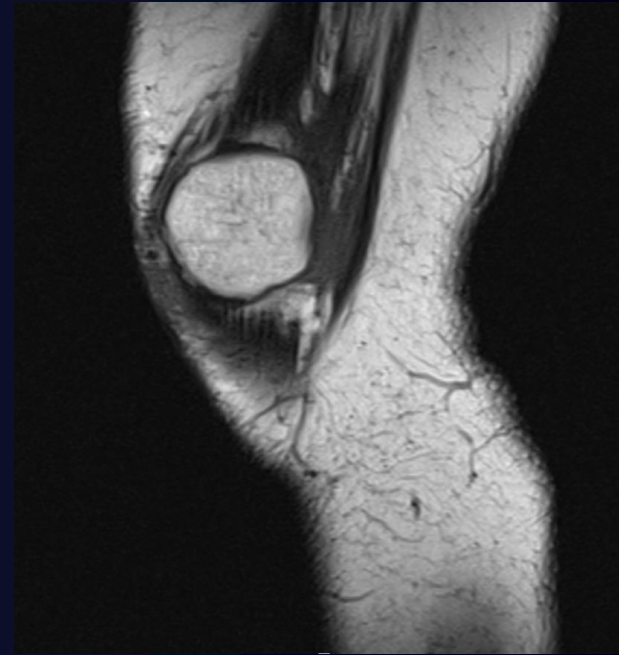
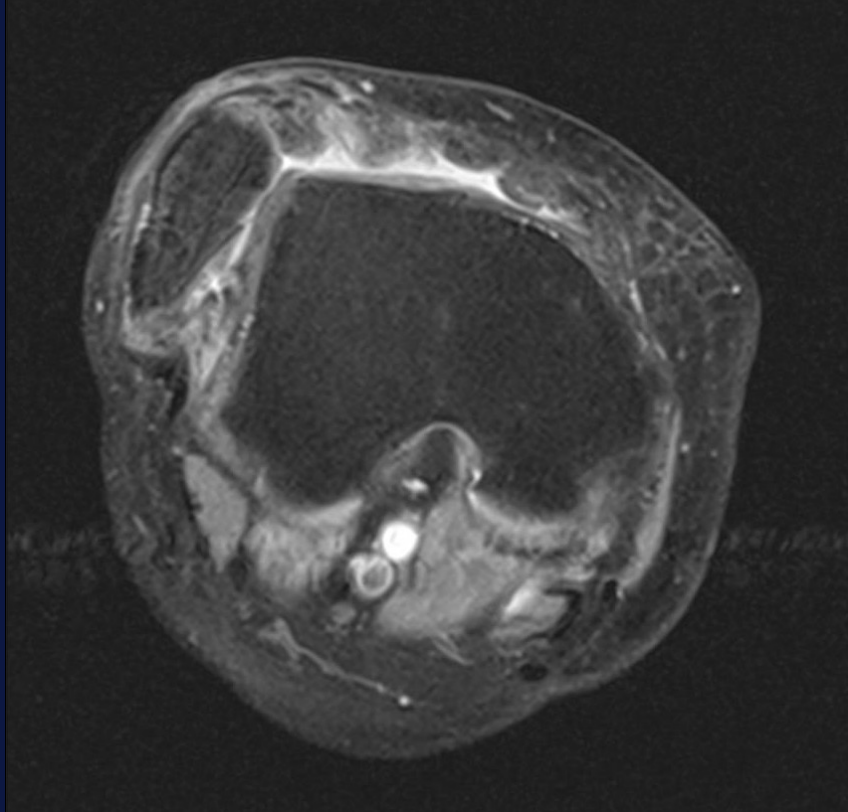


# Case 1 – 47 yo female





# Case 1

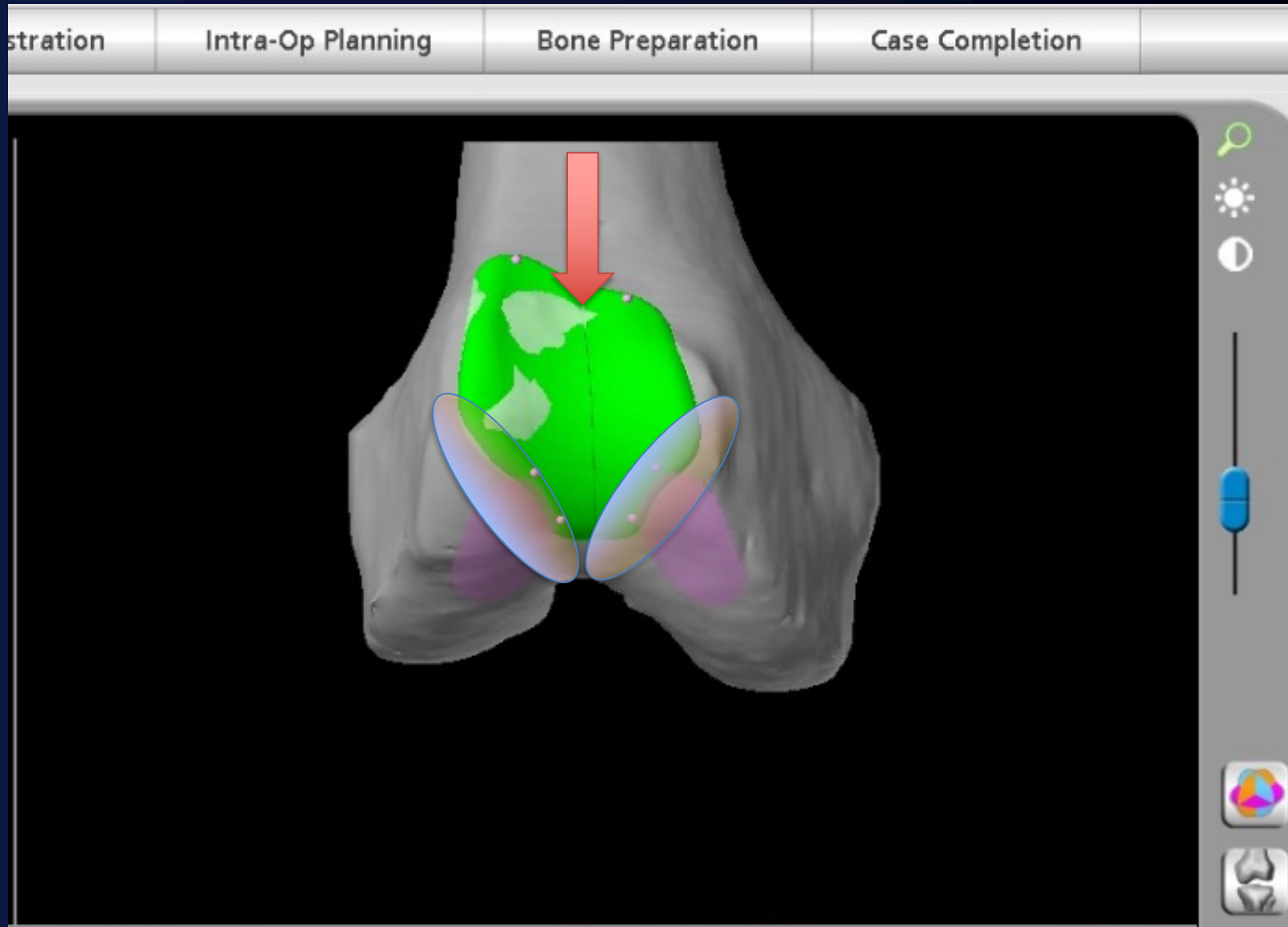


# Case 1

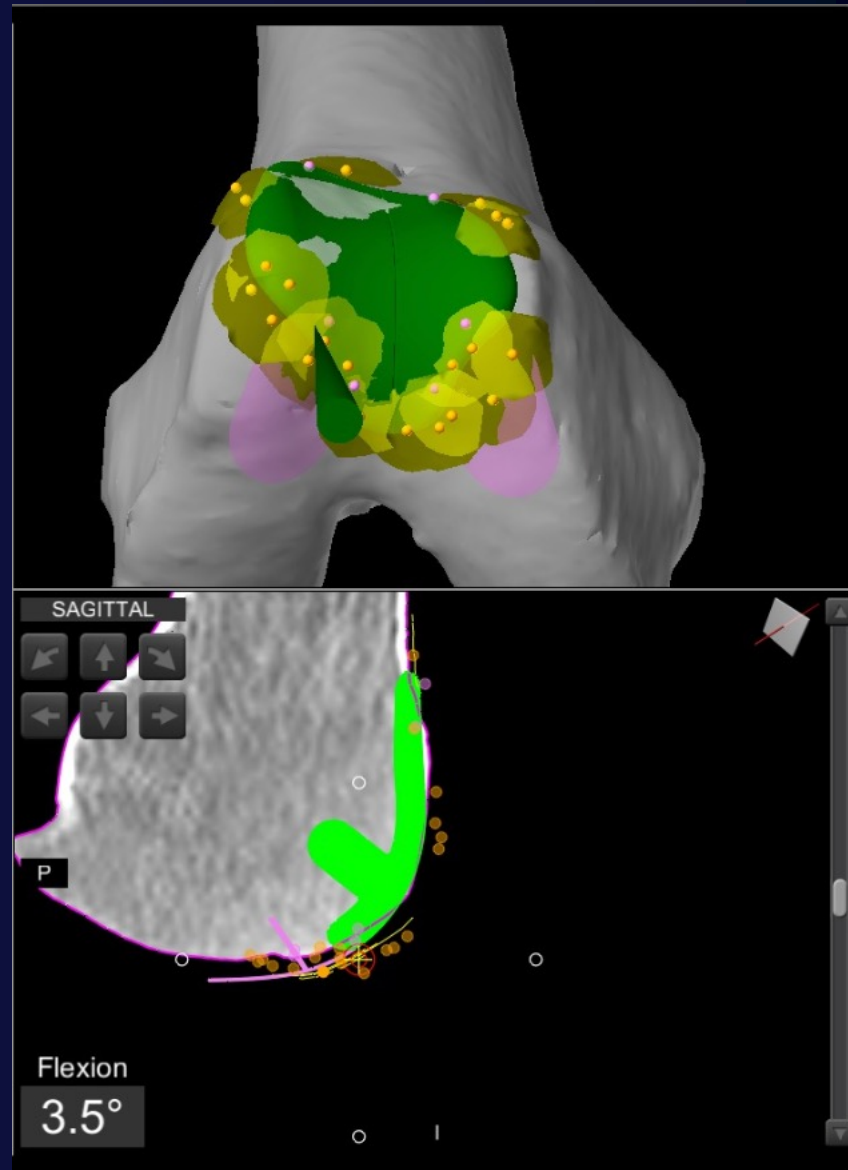


Avon PFJR + MPFL  
2017

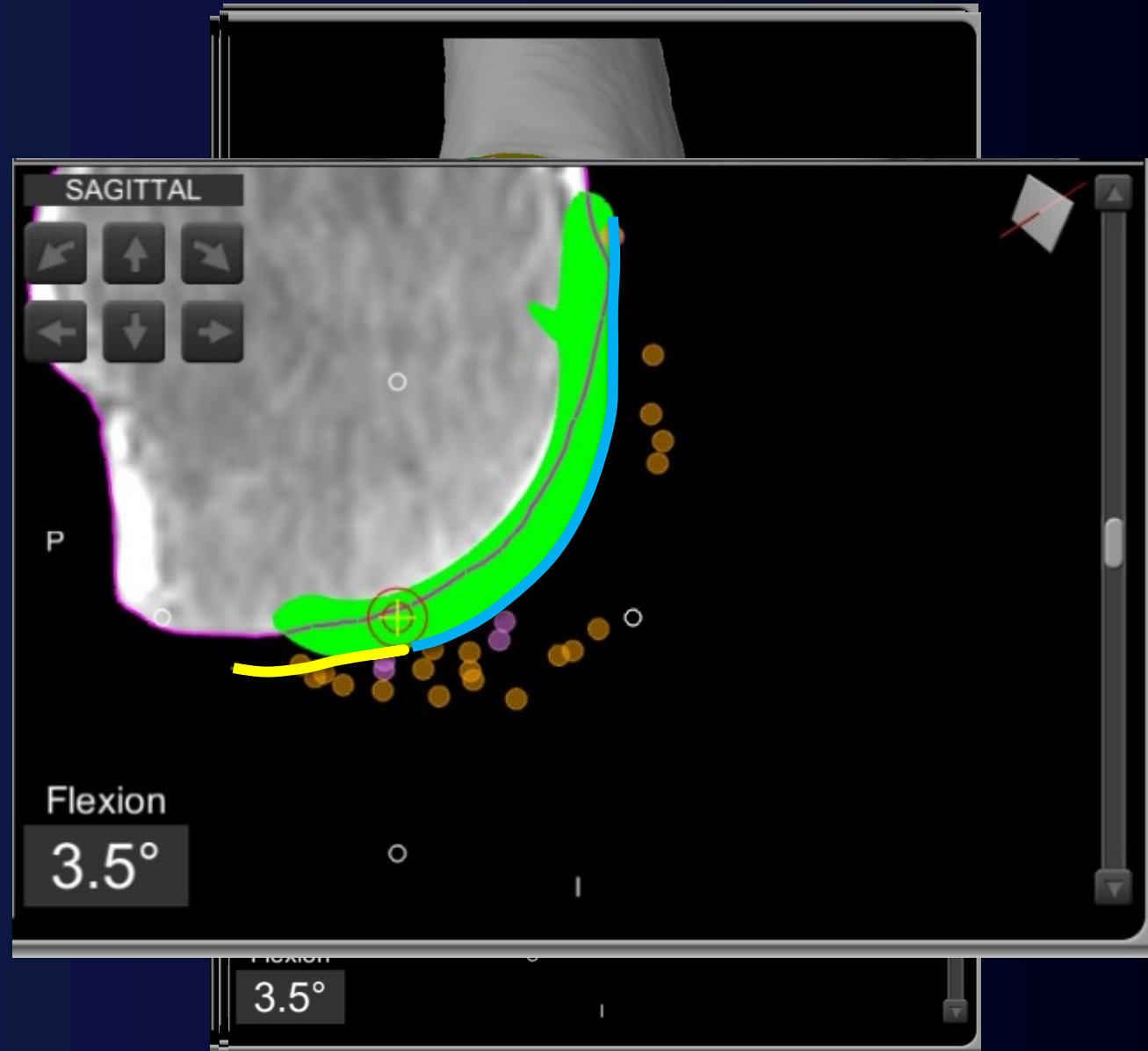
# Robotic assisted PFJR



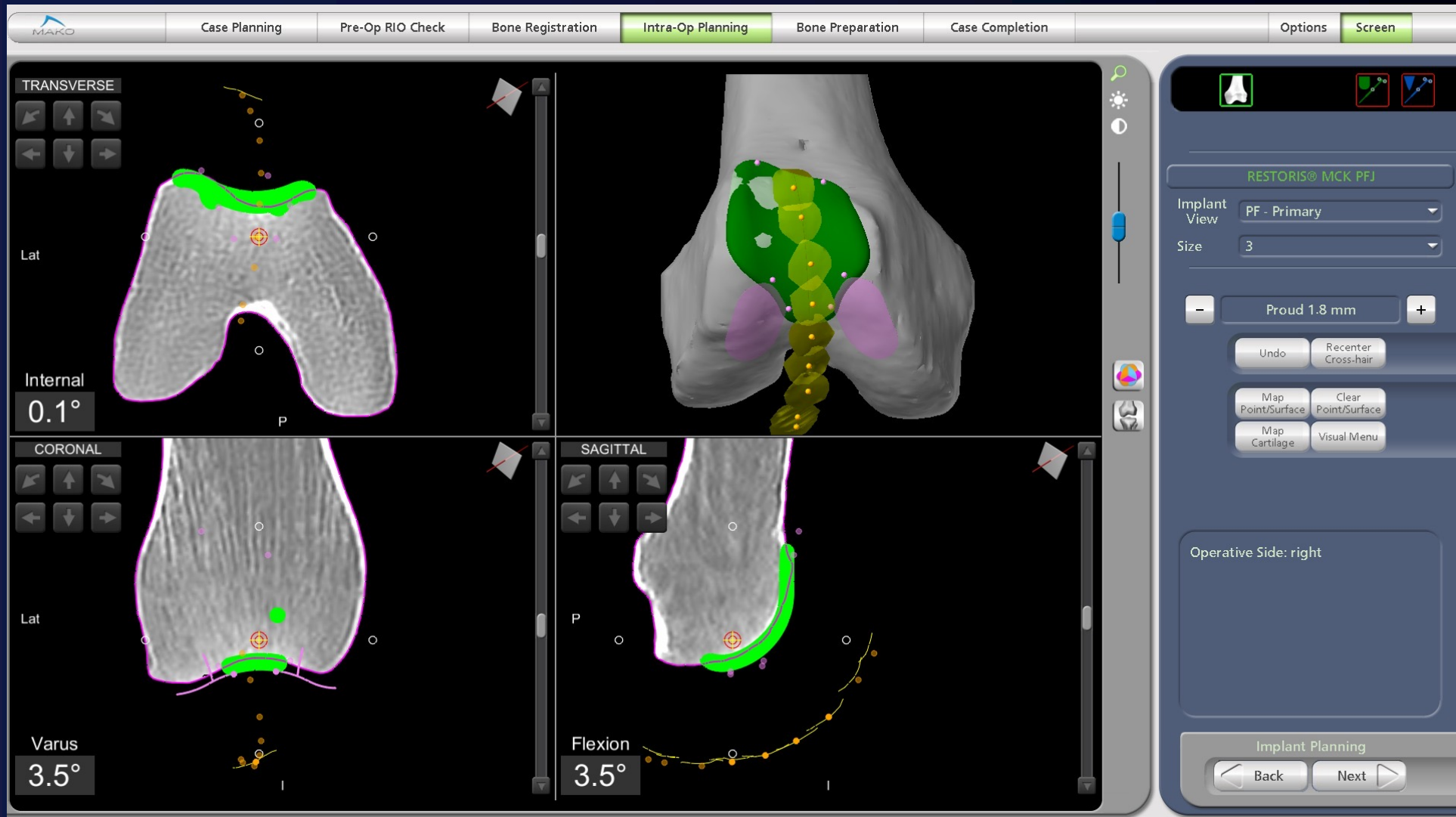
# Robotic assisted PFJR



# Robotic assisted PFJR

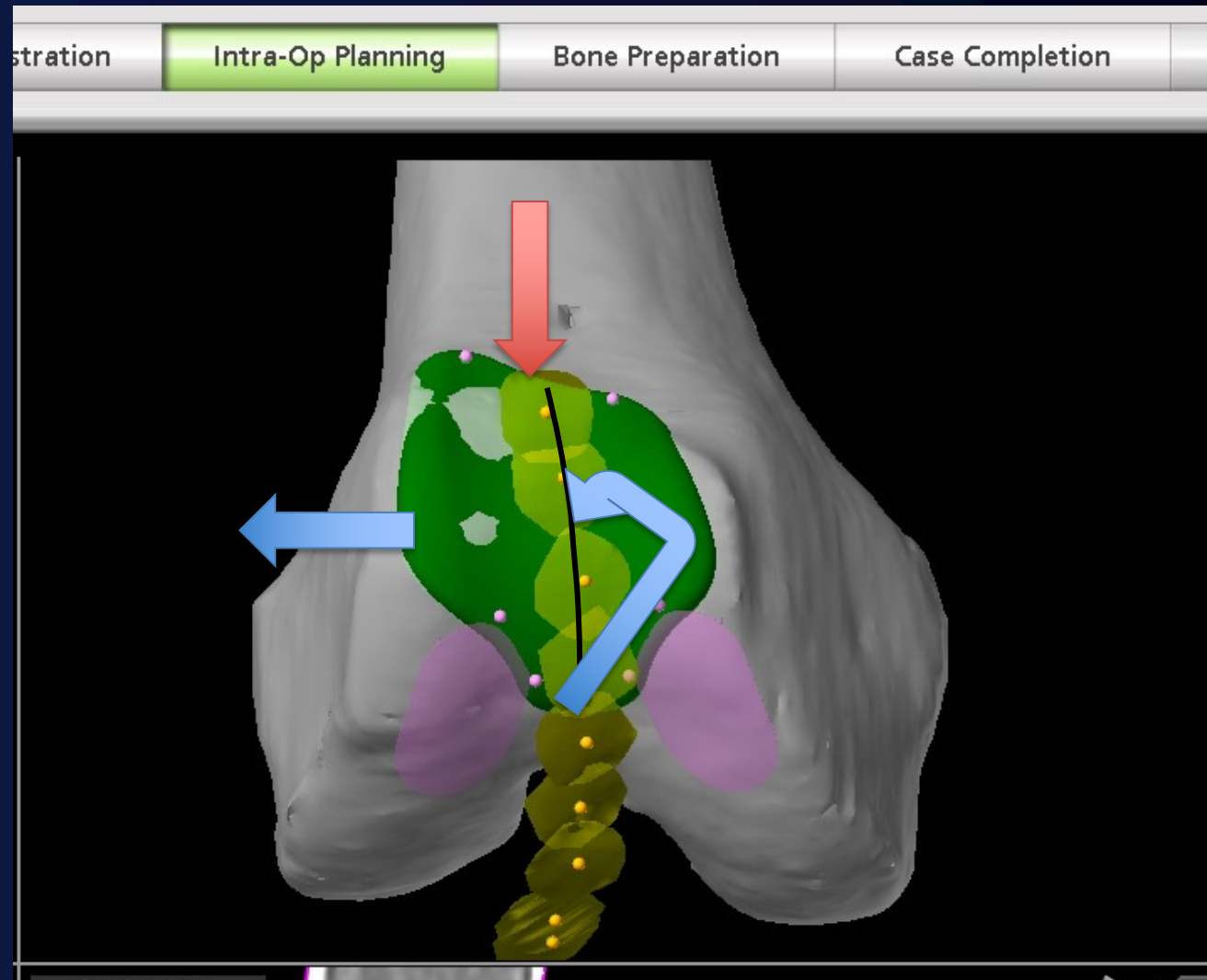


# Robotic assisted PFJR





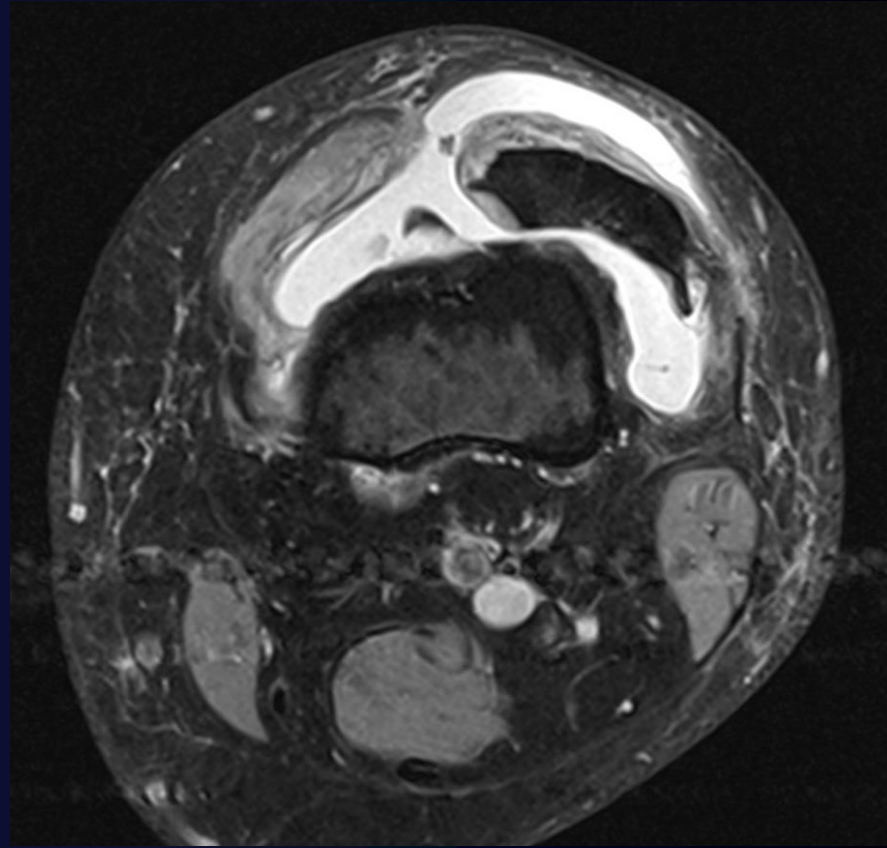
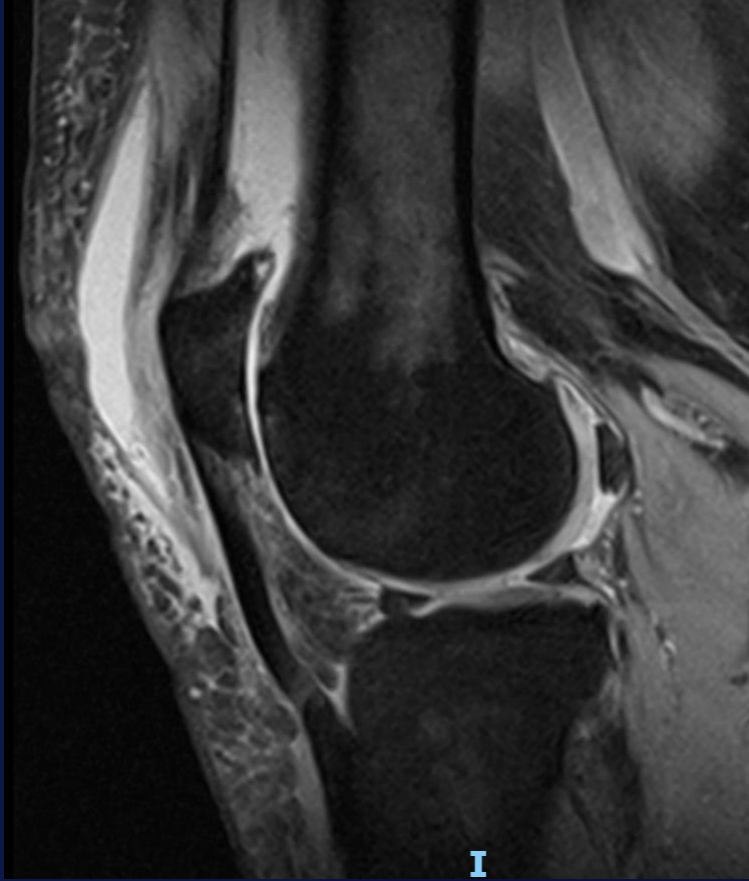
# Robotic assisted PFJR



## Case 2 – 39 yo female



## Case 2



## Case 2



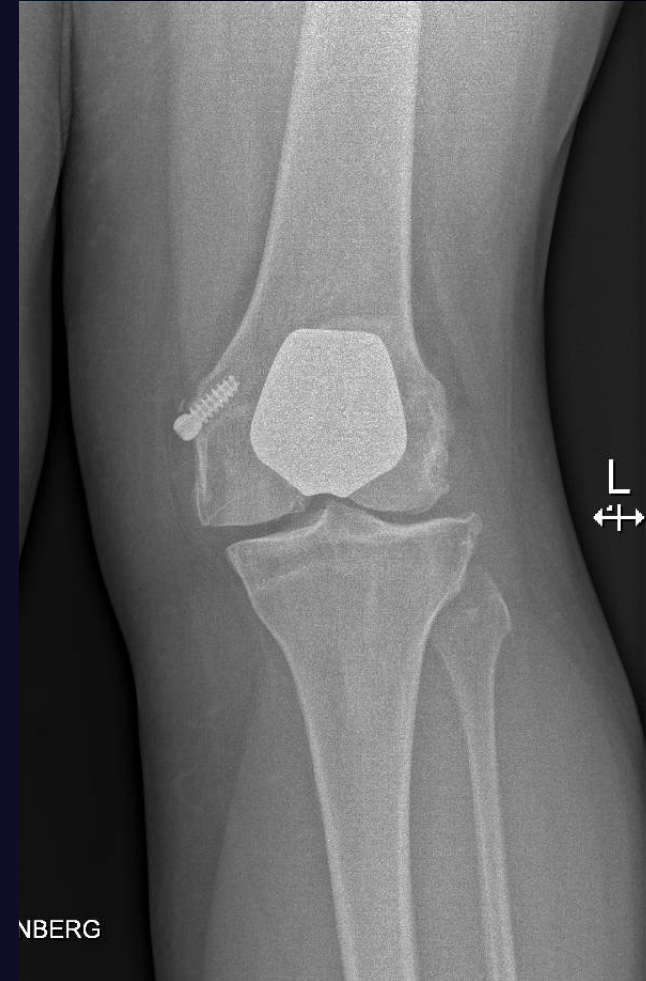
## Case 2

- Persistent maltracking
- Bothersome clicking
- Revision to TKR?
- Instability paradigm...



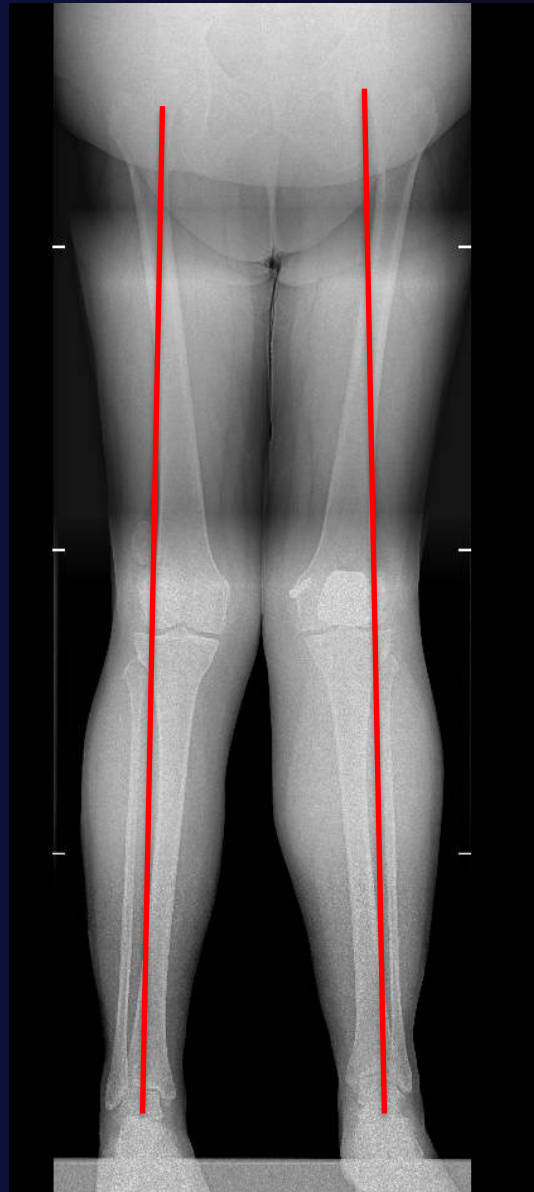
## Case 2

- Trochlea ✓
- MPFL ✓
- Patella?
  - TT-TG 23

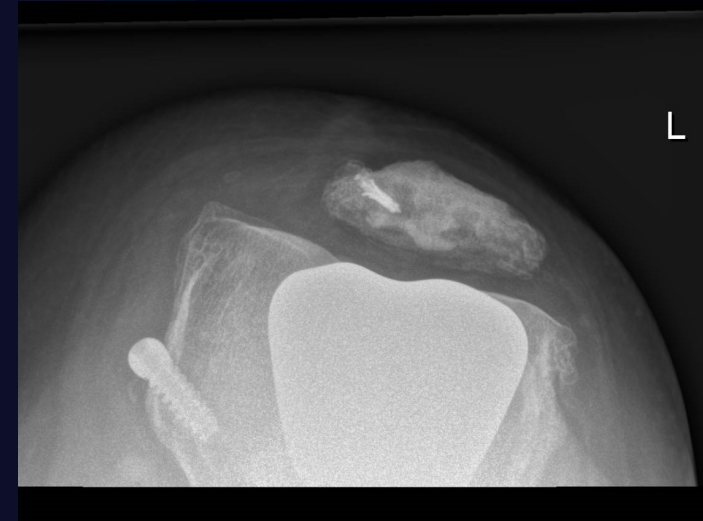




## Case 2

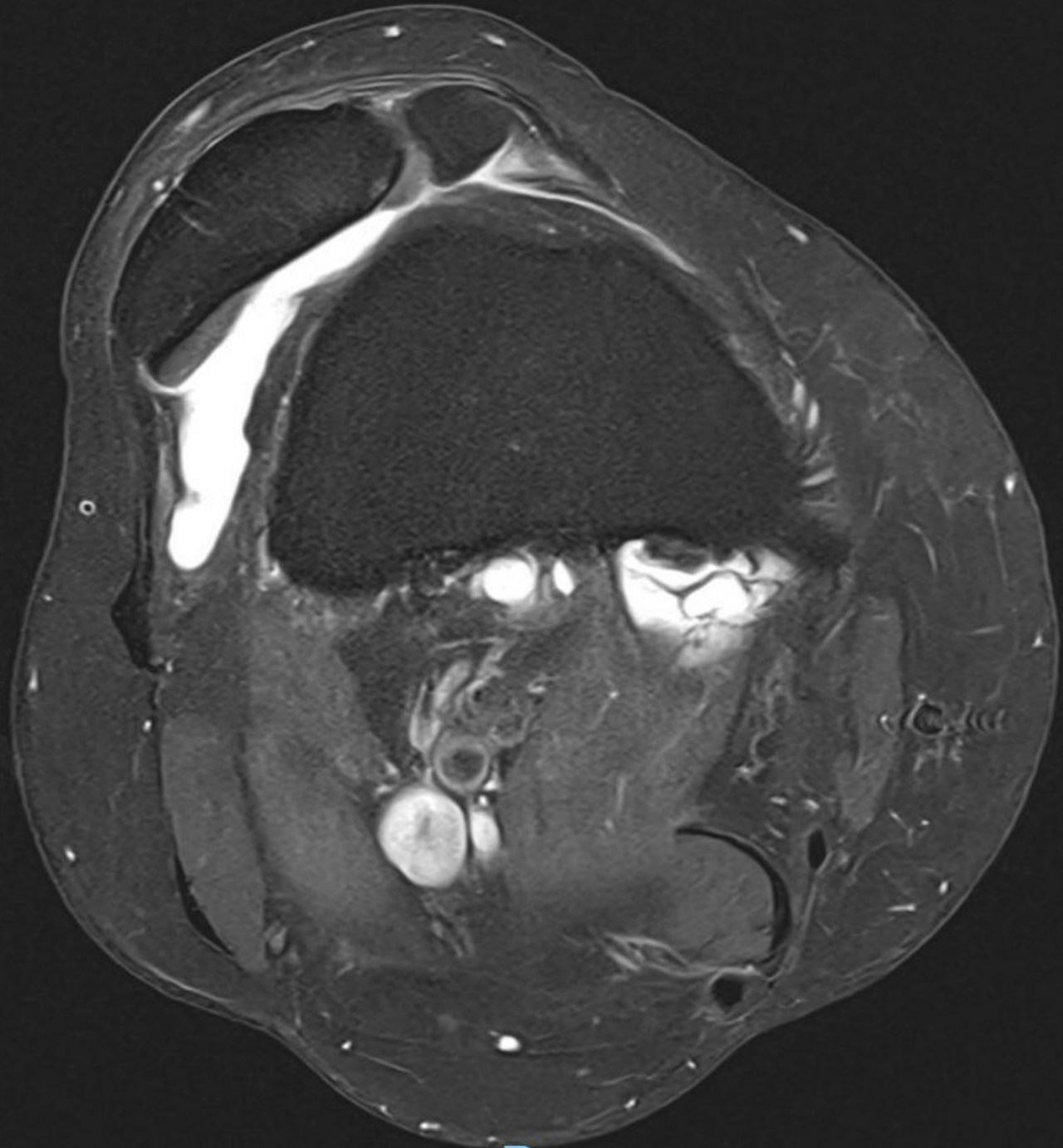


## Case 2

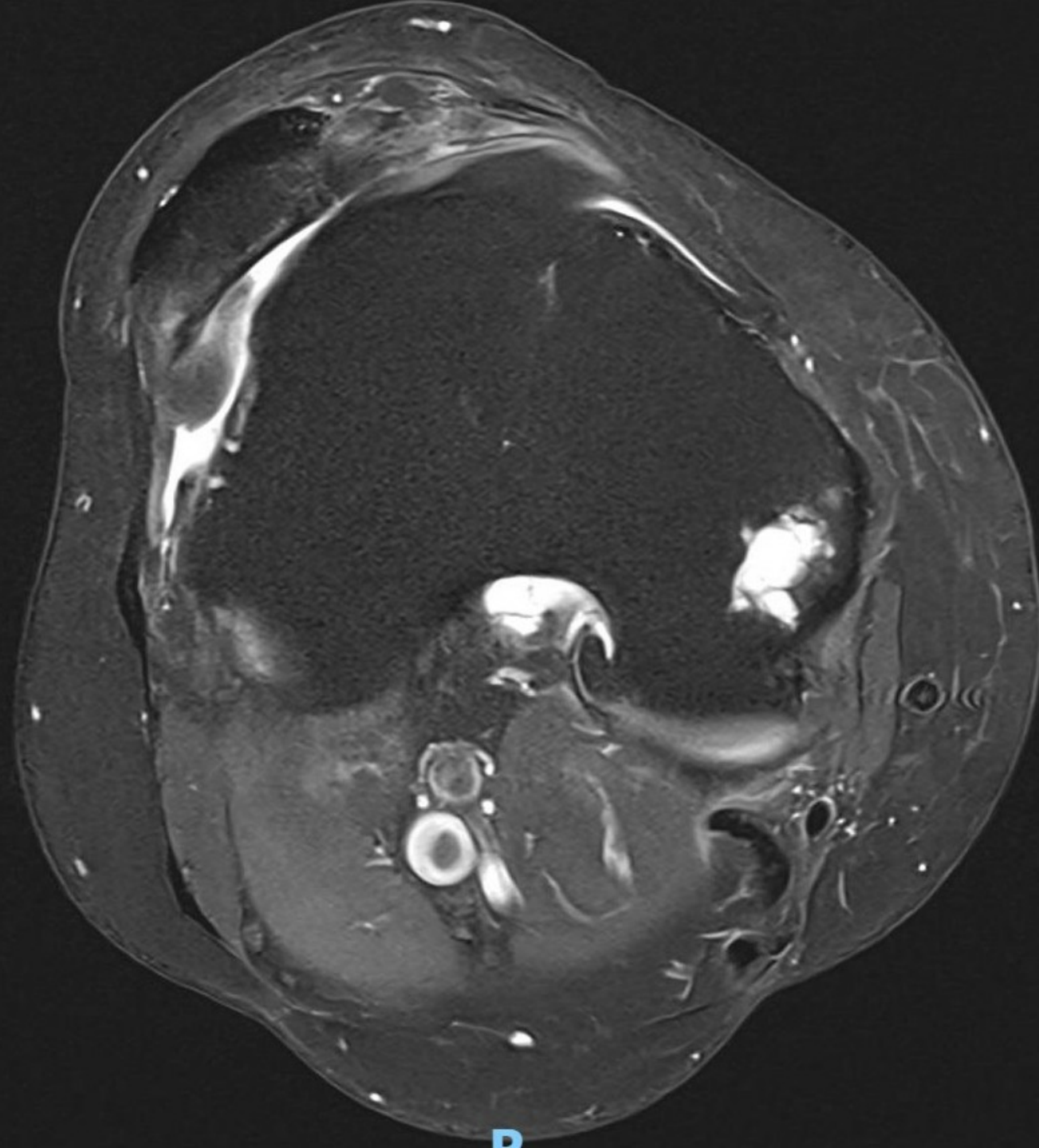


## Case 3 – 42 yo female

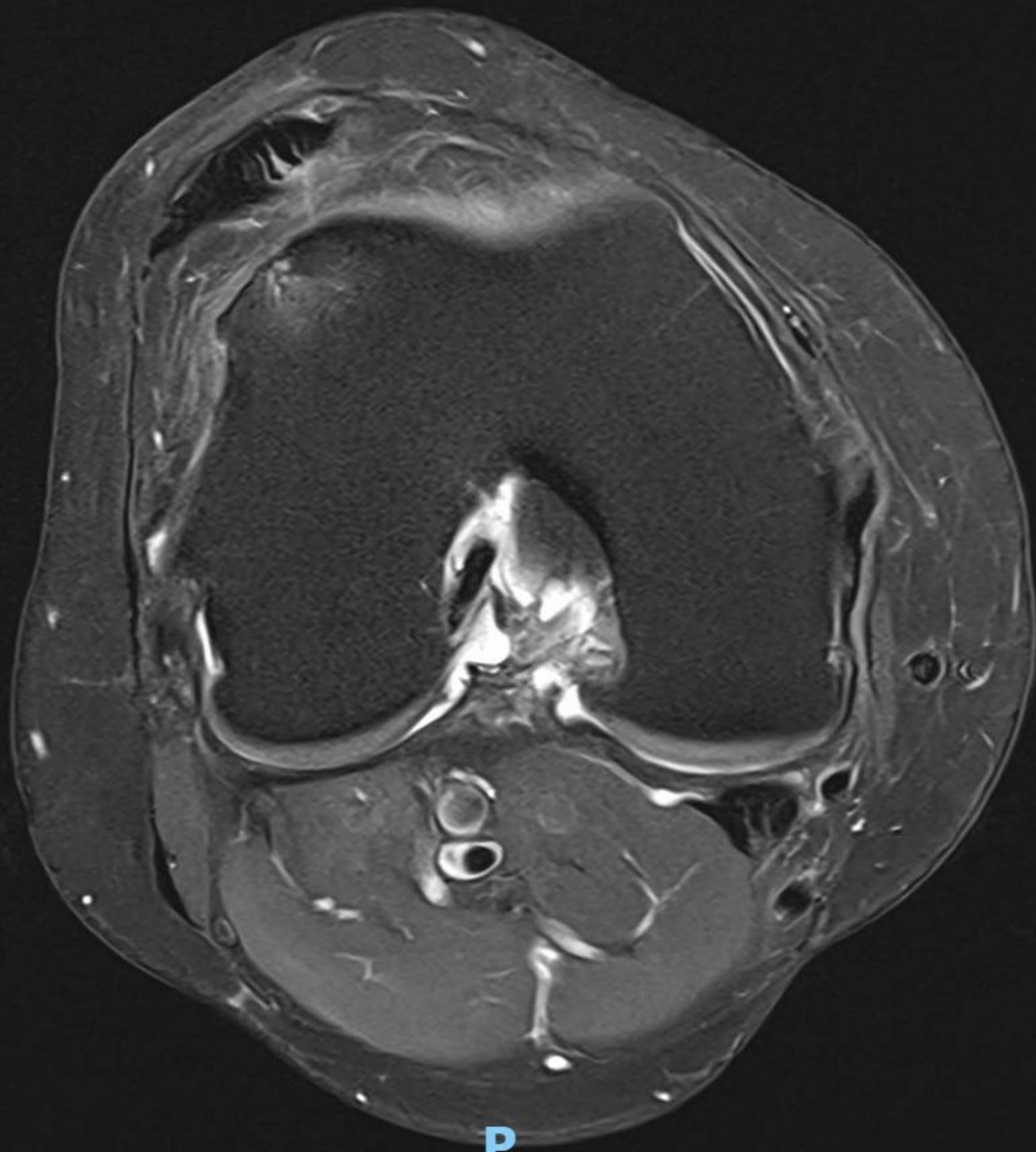




P

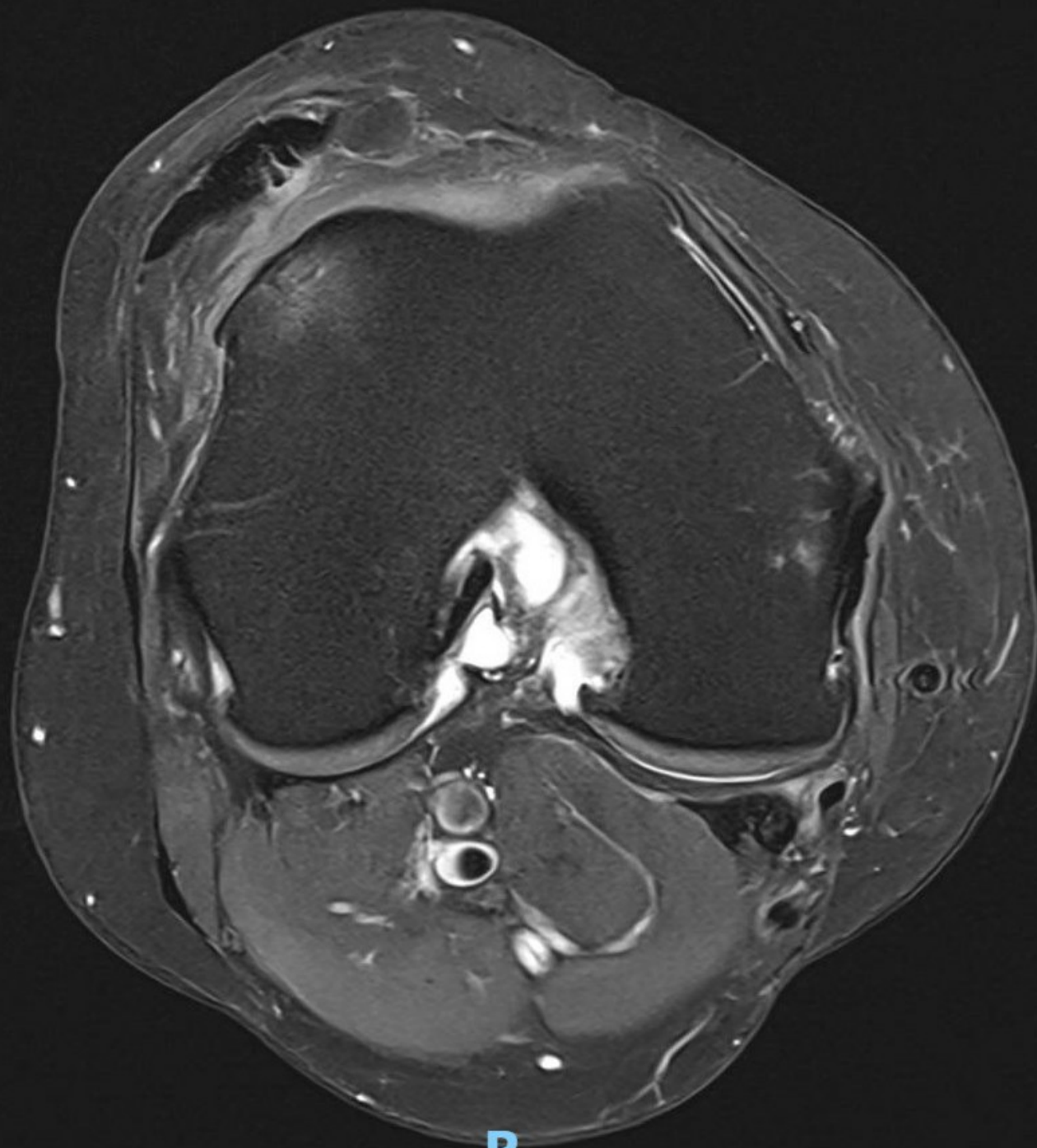


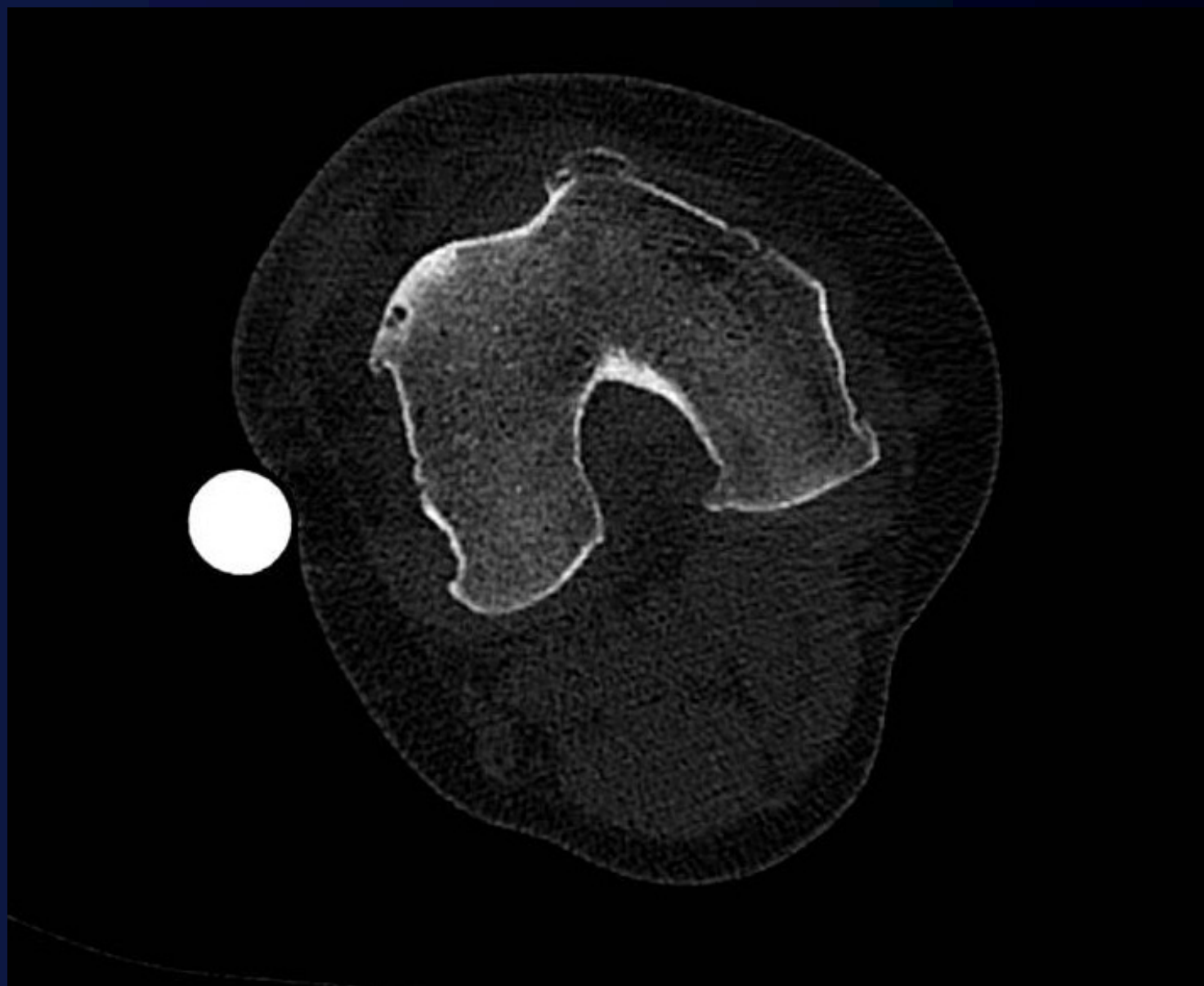


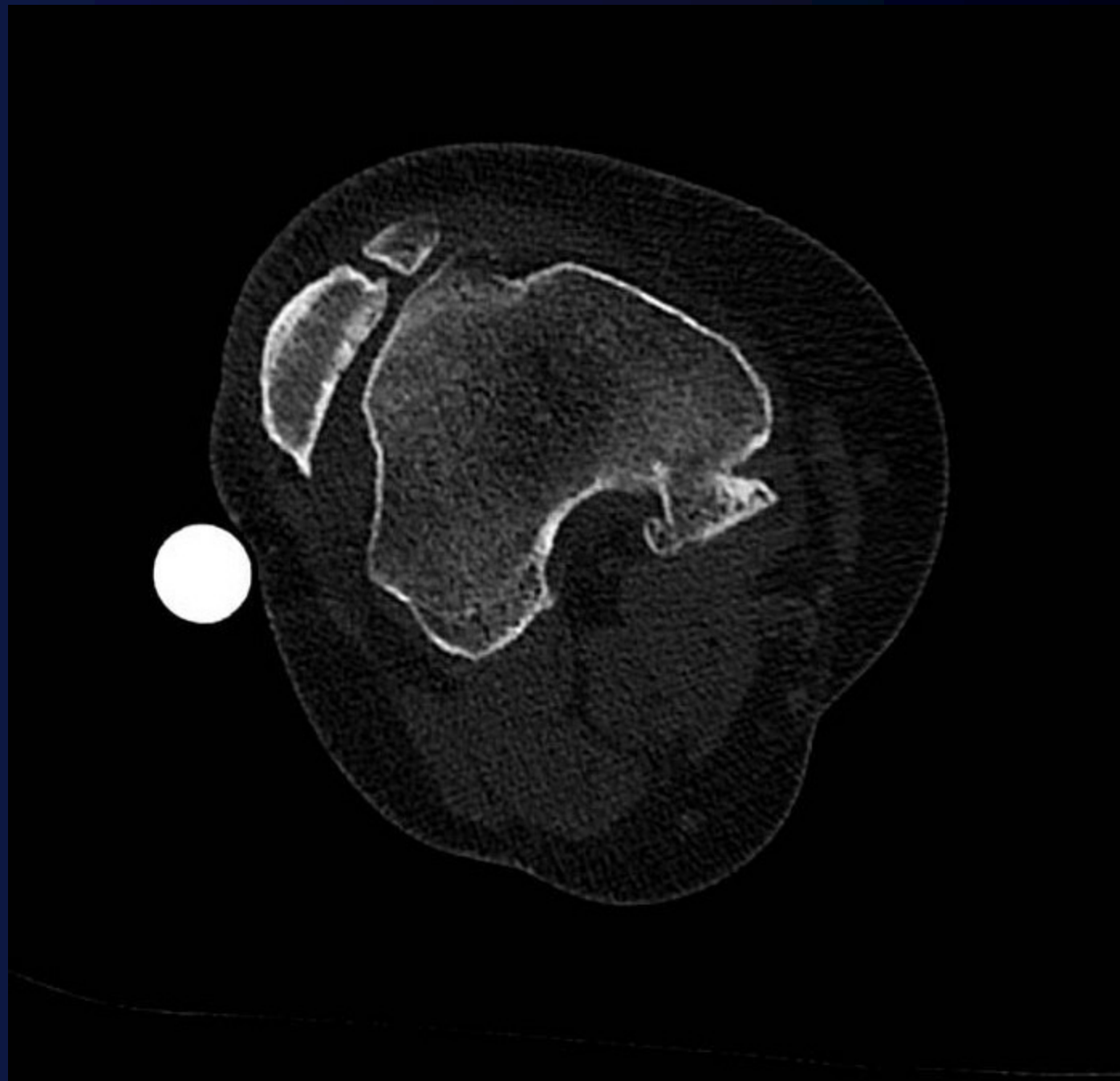


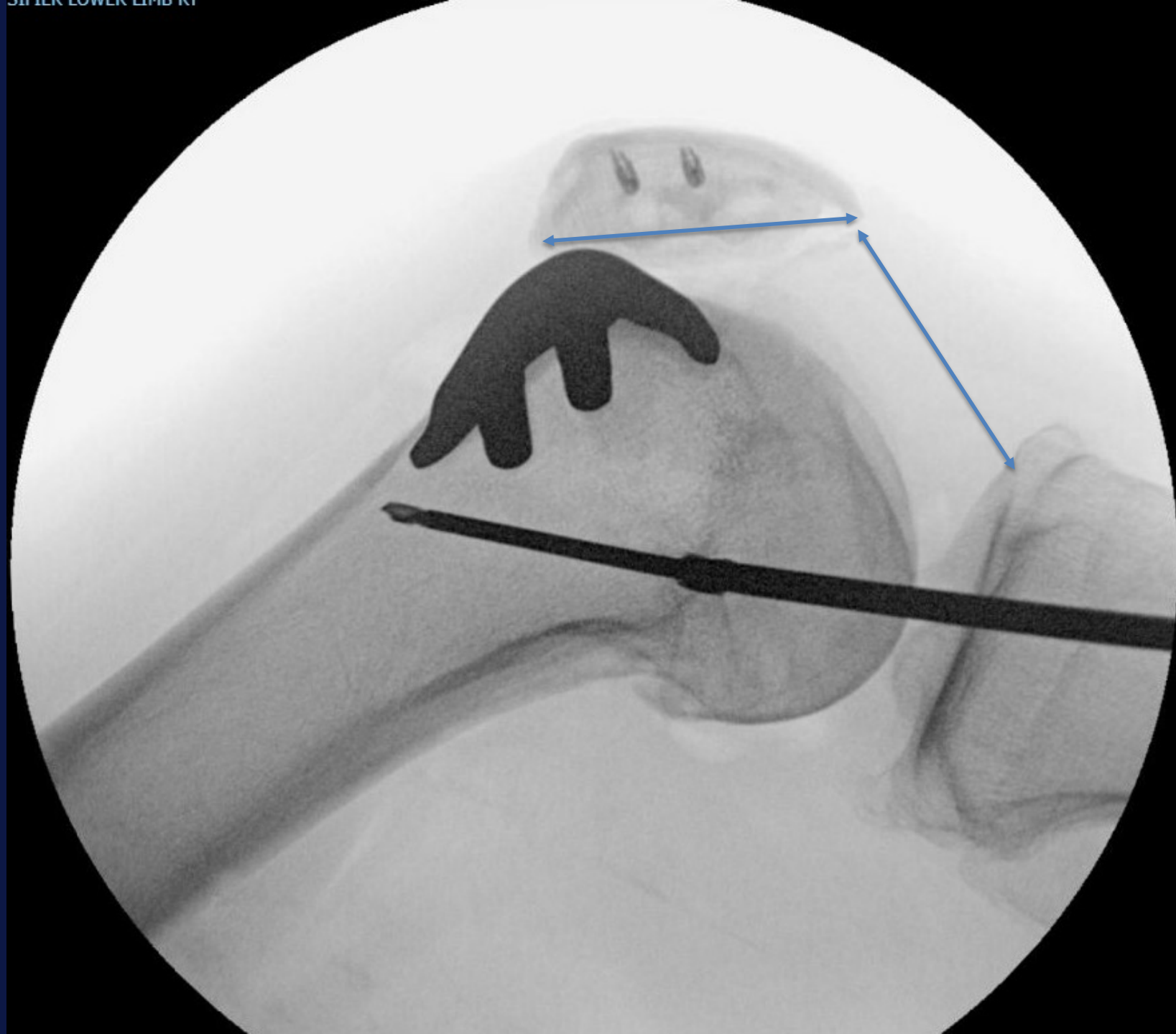
P



















# Conclusions

- OA is the end point for trochlear dysplasia
- This is often isolated to the PFJ
- PFJR is an attractive proposition
- Create a trochlear with the implant
- Concentrate on tracking and transition
- Follow a stabilization algorithm to achieve good results



# Thank you

